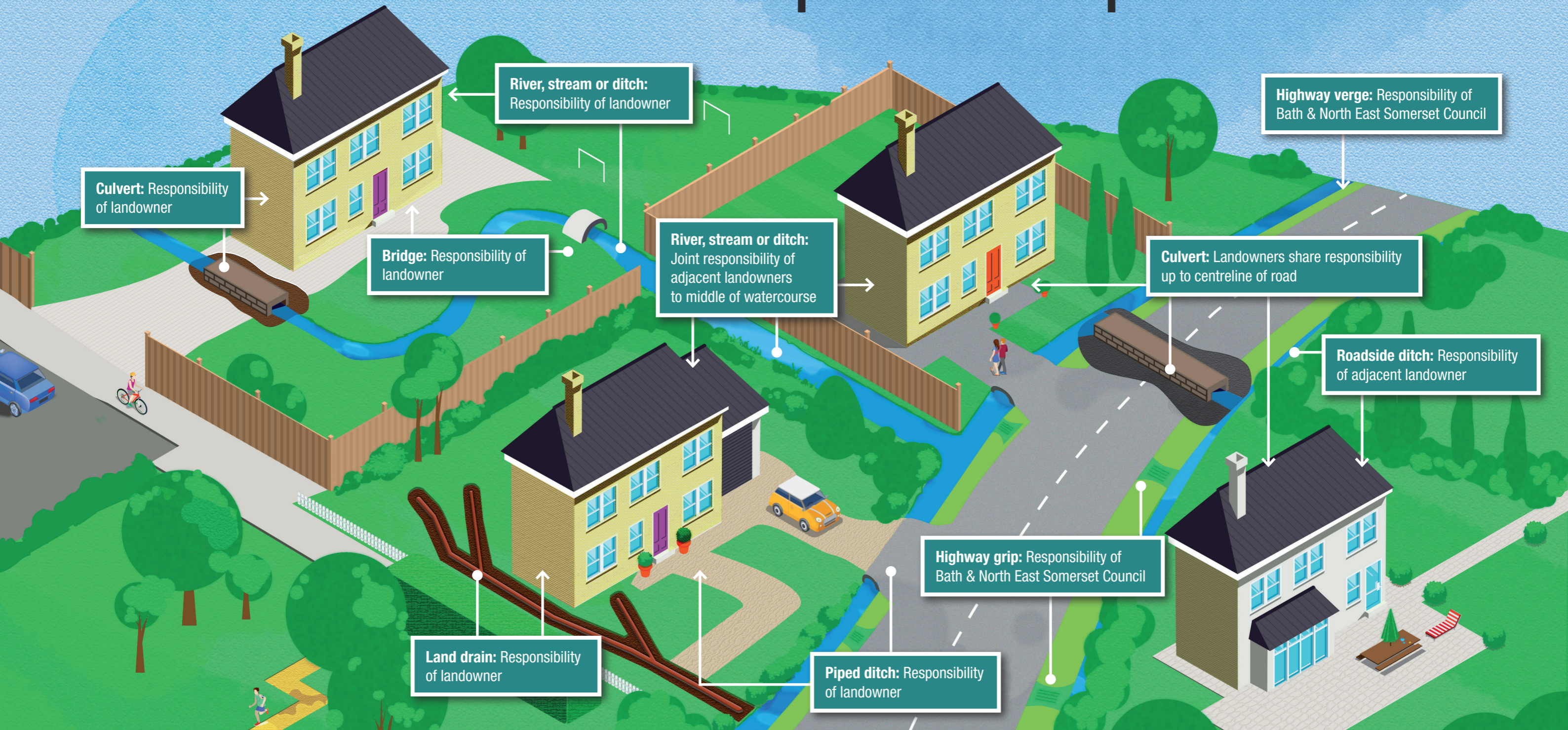


# Watercourse ownership and responsibilities



If you have a watercourse running through or alongside your land you are responsible for ensuring that water can flow freely and is not polluted. You may have to remove blockages, fallen trees or overhanging branches from your watercourse, or cut back trees and shrubs on the bank.

## What you can do if you see a blocked watercourse.

If you see a blocked watercourse, your first point of contact should be the person or organisation responsible for its maintenance. A 'watercourse' can be any river, brook, ditch, stream or culvert.

If you're not sure who owns an area of land, it's often worthwhile talking to local neighbours or your Parish Council. Alternatively, a land registry search can be carried out. Be aware that title deeds for a property may not show watercourses within the property boundary.

Any proposed alterations to a watercourse, or the construction of structures such as weirs, culverts, bridges or outfalls, may require formal consent from the Environment Agency or Bath & North East Somerset Council before they can be made. To find out more about watercourse rights and responsibilities visit [www.gov.uk/guidance/owning-a-watercourse](http://www.gov.uk/guidance/owning-a-watercourse)

**Your Local Flood Rep is:**